

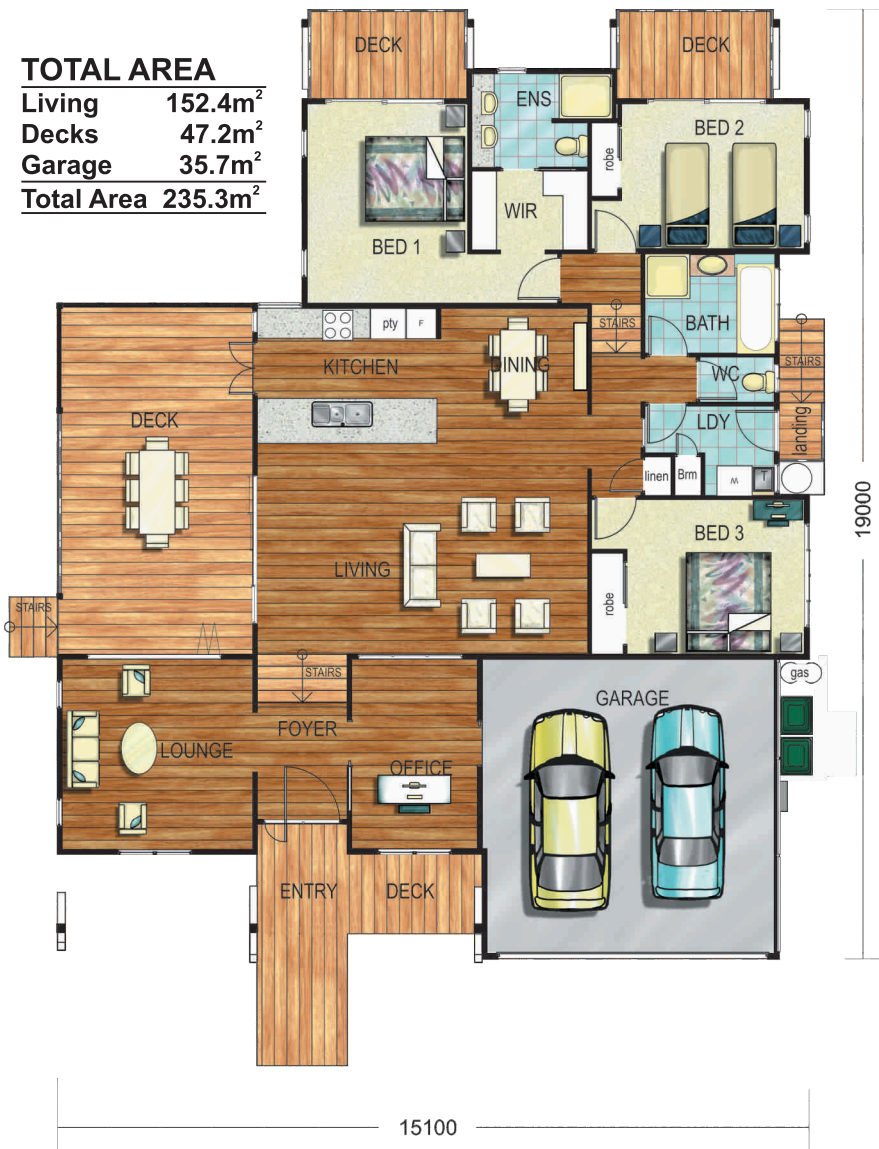


## NEWPORT 235

## Queensland Beach House - Series

### TOTAL AREA

Living	152.4m <sup>2</sup>
Decks	47.2m <sup>2</sup>
Garage	35.7m <sup>2</sup>
<b>Total Area</b>	<b>235.3m<sup>2</sup></b>



**Garth Chapman**  
TRADITIONAL QUEENSLANDERS  
Contemporary Homes



## Queensland Beach House - Series

- SITE SPECIFIC,
- ENERGY EFFICIENT &
- ENVIRONMENTALLY FRIENDLY
- DESIGNS TO SUIT SLOPING LAND



- 100% Design Flexibility
- No Penalty for custom design

[www.GarthChapman.com.au](http://www.GarthChapman.com.au)

© Designs and plans are copyright in whole and in part to Garth Chapman Queenslanders. The plans may not be reproduced in whole or any part without written approval. All breaches will be pursued. Important Note: The policy of continual attention to design and construction requires that all specifications, plans and dimensions are subject to change without notice at any time. Plans and elevations (including furniture, landscaping, pools, vehicles) and photography as shown are for illustration purposes only and do not form part of any contract. This brochure is for guidance only and does not constitute an offer or contract. Intending purchases should refer solely to their contract documents and contract specification for a full list of inclusions. Design & Specification subject to council approval. Issued 22nd Oct 2010